

QUAD-LOCK®

Building Systems Ltd.



Product Catalog

Released September 2010 Ver. 10.1.0

Table of Contents

Quad-Lock System Components	
Panels.....	3
Quad-Lock R-Value & Wall Configurations - Imperial.....	4
Quad-Lock R-Value & Wall Configurations - Metric.....	5
Standard Ties.....	6
Wire Top Ties.....	6
Specialty Ties.....	7
Half Ties.....	7
Metal Brackets.....	8
Metal Track.....	9
Track Fastener.....	9
Quad-Deck.....	10
Rebar Chair.....	10
Slab Tie & Bracket System.....	10
R-ETRO System	
R-ETRO Ties.....	11
R-ETRO Top Ties.....	11
R-ETRO Track.....	11
Available Accessories	
Peel & Stick.....	12
Window Fasteners.....	12
Waterproofing Products.....	12
Damp-proofing Products.....	12
Ledger Connections.....	13
Wall Alignment/Bracing Systems.....	13
Technical Information & Reference Guides.....	14-15
Professional Services.....	16
Promotional Materials	
Brochures & Videos.....	17
Flyers & Profiles.....	18
Posters.....	19
Promotional Items.....	20
Clothing.....	21
Ancillary Brochures & Flyers.....	22
Shipping Information.....	23
Shipping Configurations.....	24
Pallet Specifications.....	25
Contact Information.....	26

North America:

7398-132nd St.
Surrey, BC V3W 4M7 Canada
www.quadlock.com

Tel: 604.590.3111 Toll Free: 888.711.5625

Fax: 604.590.8412

Email: info@quadlock.com

Europe:

Blumenstr. 1
80331 München, Germany
www.quadlock.de

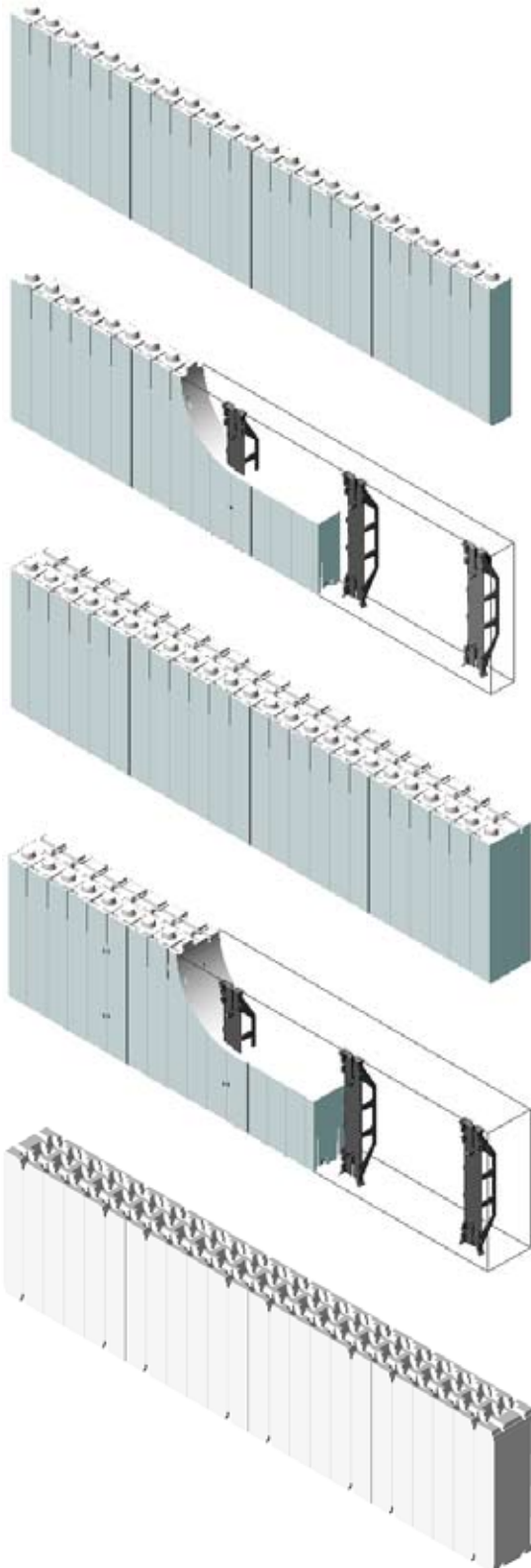
Tel: +49 (0) 89.260.3066

Fax: +49 (0) 89.260.8471

Email: service@quadlock.de

Quad-Lock System Components: Panels

Quad-Lock Panels are high density and shape-molded using fire-retardant expanded polystyrene (EPS). Each panel is scored and slotted every 2" [50mm] for easy measuring, cutting and tie placement.



■ Panel Pair – Regular

2¼" [57mm] panel thickness
48" long x 12" high [1219mm x 305mm]
5 panel pairs/bag (10 panels)
16 bags/pallet
Part #: **QPX2**



This is the standard panel pair that is our most popular product.

■ Panel Pair – Regular FS

Regular Panels with 1½" [38mm] Fastening Strips installed every 12" [305mm] on center
2¼" [57mm] panel thickness
48" long x 12" high [1219mm x 305mm]
5 panel pairs/bag (10 panels) | 16 bags/pallet
Part #: **QPX2 FS**



Use FS Panels for lapped siding or other finish requiring a continuous vertical fastening surface.



FS Panels are recommended for commercial projects.

■ Panel Pair – Plus

4¼" [108mm] panel thickness
48" long x 12" high [1219mm x 305mm]
3 panel pairs/bag (6 panels)
12 bags/pallet
Part #: **QPX2 Plus**



Use Plus Panels for wall width transitions or for additional R-Value. An R-30 configuration shifts the thermal center of the wall to the inside.

■ Panel Pair – Plus FS

Plus Panels with 1½" [38mm] Fastening Strips installed every 12" [305mm] on center
4¼" [108mm] panel thickness
48" long x 12" high [1219mm x 305mm]
3 panel pairs/bag (6 panels) | 12 bags/pallet
Part #: **QPX2 Plus FS**

■ Extra Panel

Extra Panels are used to add R-Value to the existing panels. They are reversible (in all directions) and are added to the inside of the Regular, Plus or FS panels.
4" [102mm] panel thickness
48" long x 12" high [1219mm x 305mm]
6 panels/bag | 12 bags/pallet
Part #: **QPEXTRA**

Quad-Lock System Configurations - Imperial

R-Values & Wall Configuration Options - Imperial

Desired R-Value	Desired Concrete Cavity	Total Wall Width	QPX2	QPX2 PLUS	QPEXTRA	FTB4	FTB6	FTY8	FTG10	FTR12	FTB14	XT	Samples With 5.75" Cavity
R-22	5.75"	10.25"					X						
	7.75"	12.25"	X					X					
	9.75"	14.25"							X				
R-30	5.75"	12.25"	X	X				X					
	7.75"	14.25"							X				
	9.75"	16.25"								X			
R-38	5.75"	14.25"		X					X				
	7.75"	16.25"								X			
	9.75"	18.25"									X		
R-38 TMO	5.75"	14.25"	X		X				X				
	7.75"	16.25"								X			
	9.75"	18.25"									X		
R-45	5.75"	16.25"	X	X	X					X			
	7.75"	18.25"									X		
	9.75"	20.25"				X						X	
R-53	5.75"	18.25"		X	X						X		
	7.75"	20.25"				X						X	
	9.75"	22.25"					X					X	
R-53 TMO	5.75"	18.25"	X		2X	X					X		
	7.75"	20.25"					X					X	
	9.75"	22.25"						X				X	
R-61	5.75"	20.25"	X	X	2X	X						X	
	7.75"	22.25"					X					X	
	9.75"	24.25"						X				X	
R-69	5.75"	22.25"		X	2X		X					X	
	7.75"	24.25"						X				X	
	9.75"	26.25"							X			X	
R-77	5.75"	24.25"	X	X	3X			X				X	
	7.75"	26.25"							X			X	
	9.75"	28.25"								X		X	
R-84	5.75"	26.25"		X	3X				X			X	
	7.75"	28.25"								X		X	
	9.75"	30.25"									X	X	

Example: You want to build an R-61 wall with a 5.75" concrete cavity: Based on this table, you will need QPX2 (Regular Panels), QPX2 Plus (Plus Panels), two QPEXTRA (Extra Panels), FTB4 (4" Full Ties) and XT (Extender Ties)

Note: For larger or smaller concrete cavities, please consult our technical department. TMO = Thermal Mass Optimized

Quad-Lock System Configurations - Metric

U-Values & Wall Configuration Options - Metric

Desired U-Value	Desired Concrete Cavity [mm]	Total Wall Width [mm]	QPX2	QPX2 PLUS	QPEXTRA	FTB4	FTB6	FTY8	FTG10	FTR12	FTB14	XT	Samples With 146mm Cavity
U-0,28	146	260	X				X						
	197	311						X					
	248	362							X				
U-0,20	146	311	X	X				X					
	197	362							X				
	248	413								X			
U-0,15	146	362		X					X				
	197	413								X			
	248	464									X		
U-0,15 TMO	146	362	X		X				X				
	197	413								X			
	248	464									X		
U-0,13	146	413	X	X	X					X			
	197	464									X		
	248	514				X						X	
U-0,11	146	464		X	X						X		
	197	514				X						X	
	248	565					X					X	
U-0,11 TMO	146	464	X		2X						X		
	197	514				X						X	
	248	565					X					X	
U-0,09	146	514	X	X	2X	X						X	
	197	565					X					X	
	248	616						X				X	
U-0,08	146	565		X	2X		X					X	
	197	616						X				X	
	248	667							X			X	
U-0,074	146	616	X	X	3X			X				X	
	197	667							X			X	
	248	718								X		X	
U-0,068	146	667		X	3X				X			X	
	197	718								X		X	
	248	768									X	X	

Example: You want to build an U-0,09 wall with a 146mm concrete cavity: Based on this table, you will need QPX2 (Regular Panels), QPX2 Plus (Plus Panels), two QPEXTRA (Extra Panels), FTB4 (102mm Full Ties) and XT (Extender Ties)

Note: For larger or smaller concrete cavities, please consult our technical department. TMO = Thermal Mass Optimized

Quad-Lock System Components: Ties

Standard Full Ties

Standard Full Ties are injection-molded, high density polyethylene (HDPE). Available in five standard sizes and color-coded for easy identification.



■ Full Tie – Brown

14" [350mm] Tie
30 Ties/pkg.
Part #: **FTB 14**

■ Full Tie – Green

10" [254mm] Tie
40 Ties/pkg.
Part #: **FTG 10**

■ Full Tie – Blue

6" [152mm] Tie
60 Ties/pkg.
Part #: **FTB 6**

■ Full Tie – Red

12" [305mm] Tie
40 Ties/pkg.
Part #: **FTR 12**

■ Full Tie – Yellow

8" [203mm] Tie
50 Ties/pkg.
Part #: **FTY 8**

■ Full Tie – Black

4" [102mm] Tie
60 Ties/pkg.
Part #: **FTB 4**

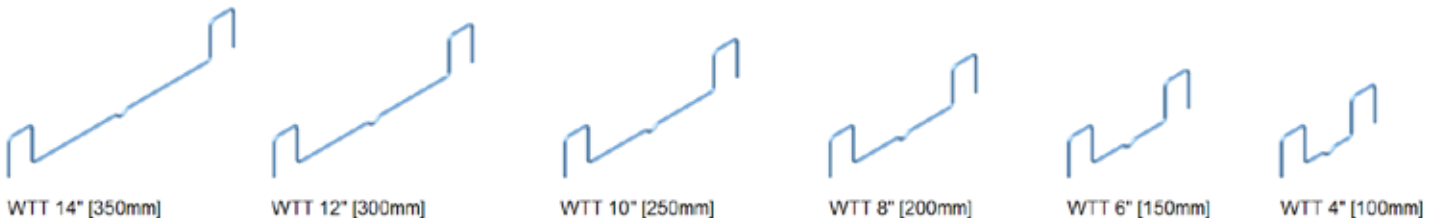


Two Panels and four Ties are referred to as one "Unit" or "Block".

Wire Top Ties

Wire Top Ties are used in conjunction with the Metal Track to easily finish the top of Quad-Lock walls. They keep the top panels plumb, secure and in position to create a straight wall. They remain hidden below the top of the concrete and hold the top horizontal rebar.

Important Note: The length descriptions of the Wire Top Ties below, i.e. Wire Top Tie - 12", refer to the concrete cavity width not the actual length of the tie itself or the width of the wall.



■ Wire Top Tie - 14"

14" [350mm] Wire Top Tie
- used for 13¾" [349mm] cavity
100 Ties/pkg. | Part #: **WTT 14**

■ Wire Top Tie - 10"

10" [254mm] Wire Top Tie
- used for 9¾" [248mm] cavity
100 Ties/pkg. | Part #: **WTT 10**

■ Wire Top Tie - 6"

6" [152mm] Tie
- used for 5¾" [147mm] cavity
100 Ties/pkg. | Part #: **WTT 6**

■ Wire Top Tie - 12"

12" [305mm] Wire Top Tie
- used for 11¾" [299mm] cavity
100 Ties/pkg. | Part #: **WTT 12**

■ Wire Top Tie - 8"

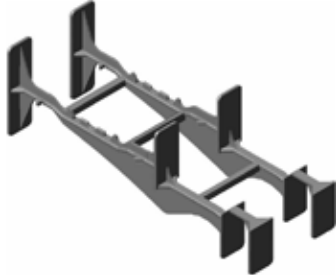
8" [203mm] Tie
- used for 7¾" [197mm] cavity
100 Ties/pkg. | Part #: **WTT 8**

■ Wire Top Tie - 4"

4" [102mm] Tie
- used for 3¾" [96mm] cavity
100 Ties/pkg. | Part #: **WTT 4**



Specialty Ties



■ Brick Ledge Tie

The Brick Ledge Tie can be used to create a concrete ledge for brick or stone exterior finishes or as an interior support for floor joists. It easily transitions the wall from a 12" [305mm] concrete cavity to a 6" [152mm] cavity (when used with Regular Panels), leaving a 3¾" [95mm] solid concrete supporting ledge, plus a 2¼" [57mm] high density foam panel capped by galvanized metal track.

15¾" [400mm] Tie

30 Ties/pkg.

Part #: **BLT**



■ Extender Tie

The Extender Tie will allow builders to create walls of almost any desired concrete thickness. Extender Ties are designed to interlock with regular Full Ties to add exactly 12" [305mm] of concrete cavity. You can also combine multiple Extender Ties with Full Ties to create concrete cavities larger than 24" [610mm].

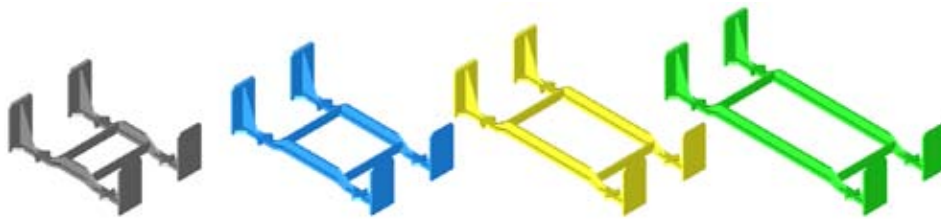
12" [305mm] Tie

40 Ties/pkg.

Part #: **XT**

Half Ties

Half Ties are used when solid surfaces prevent the use of a Full Tie/Tie Flanges. Half Ties are stocked at minimum levels. Larger orders need to be special ordered.



■ Half Tie – Black

4" [102mm] Tie

120 Ties/pkg.

Part #: **HTB 4**

■ Full Tie – Blue

6" [152mm] Tie

100 Ties/pkg.

Part #: **HTB 6**

■ Half Tie – Yellow

8" [203mm] Tie

90 Ties/pkg.

Part #: **HTB 8**

■ Half Tie – Green

10" [254mm] Tie

80 Ties/pkg.

Part #: **HTG 10**

Quad-Lock System Components: Brackets

Metal Brackets

Metal Brackets are made from 24-gauge galvanized steel and are designed to fit over all Quad-Lock Panels (QPX2, QPX2 FS, QPX2 Plus and QPX2 Plus FS). The brackets have holes that match the panels' foam interlock knobs and slots that allow the ties and tie flanges to be inserted once the bracket has been placed over the panels.



■ Inside Corner Bracket

The Inside Corner Brackets are used on every row of the inside corner panels (with the exception of the top row) for 90° corners and on the inside corners of T-walls.

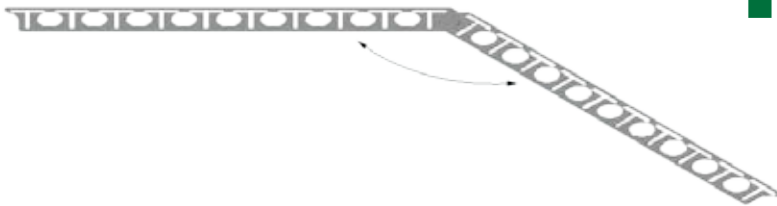
50/pkg. Part #: **CBI**



■ Outside Corner Bracket

The Outside Corner Brackets are used on every row of the outside corner panels (with the exception of the top row) and as reinforcement for the back side of T-walls.

50/pkg. Part #: **CBO**



■ Angle Bracket

Angle Brackets are hinged brackets to allow wall angles of almost any degree to be easily formed and braced. Angle Brackets are only needed on the outside of the angle wall.

50/pkg. Part #: **CBA**



■ Window/End Cap Bracket

The Window/End Cap Bracket is used to form insulated sides of window and door openings and insulated wall end caps.

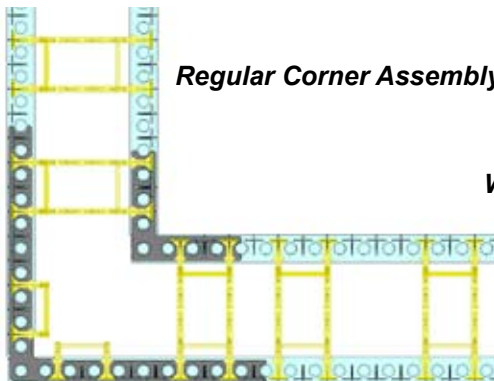
50/pkg. Part #: **CBW**



■ Straight Bracket

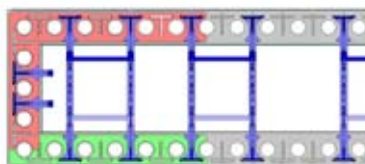
Straight Brackets are used at four-way intersections for added support.

50/pkg. Part #: **CBS**

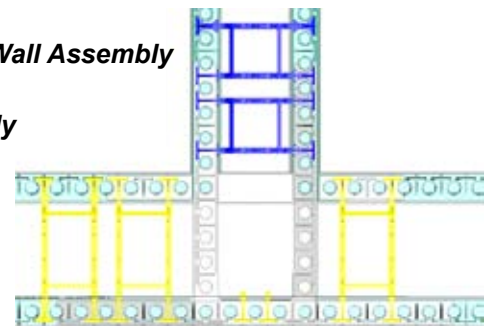


Regular Corner Assembly

Window/End Cap Bracket Assembly



T-Wall Assembly

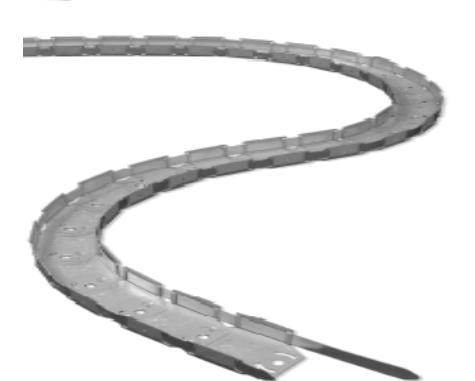
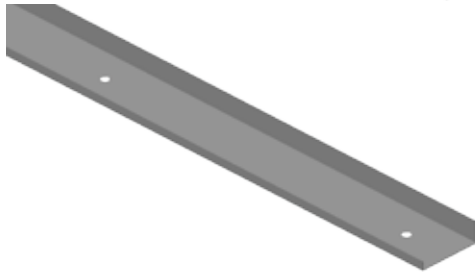


Use 2 outside and 2 inside brackets for added reinforcement on T-Walls.



Metal Track

Metal Tracks are made from 20-gauge galvanized steel and are pre-bent (with the exception of the Flex Track) to fit the dimensions of the Quad-Lock Panels to ensure the easy starting and finishing of a wall. Flex-Track allows the builder to create high quality, radius walls, simply and easily.



■ Regular Track

Use with Regular Panels (QPX2 or QPX2 FS)

Track is pre-punched every 2' [610mm] to allow for easy application of track fasteners.

2¼" wide x 10' long [57mm x 3m]

10pc/pkg. | Part #: **CTP**

2¼" wide x 7.5' long [57mm x 2.3m]

10pc/pkg. | Part #: **CTP 7.5**

■ Plus Track

Use with Plus Panels (QPX2 Plus or QPX2 Plus FS)

Track is pre-punched every 2' [610mm] to allow for easy application of track fasteners.

4¼" wide x 10' long [108mm x 3m]

10pc/pkg. | Part #: **CTP Plus**

4¼" wide x 7.5' long [108mm x 2.3m]

10pc/pkg. | Part #: **CTP Plus 7.5**

■ Flex-Track "L"

Flex-Track "L" is used to secure radius walls. The "L" channel design can be used with Regular and Plus Panels.

2¼" x 10' long [57mm x 3.05m]

1 each

Part #: **CTP FLEXWIDE**

■ Flex-Track "U"

Flex-Track "U" is used to secure radius walls. The "U" channel design provides you with added reinforcement and is specifically designed for Regular Panels (QPX2 or QPX2 FS). If you require this for use with Plus Panels (QPX2 Plus or QPX2 Plus FS), these can be special ordered.

2½" x 10' long [64mm x 3.05m]

1 each

Part #: **CTP FLEX**

■ Track Fastener

Zamac Nail Drive Anchors from UCAN Fastening Products

¼" x 1¼" [6mm x 31mm]

100/box

Part #: **CTP FASTENER**

Quad-Deck

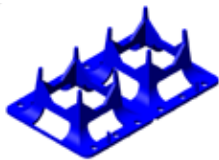
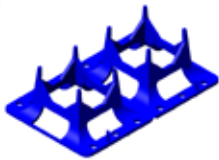
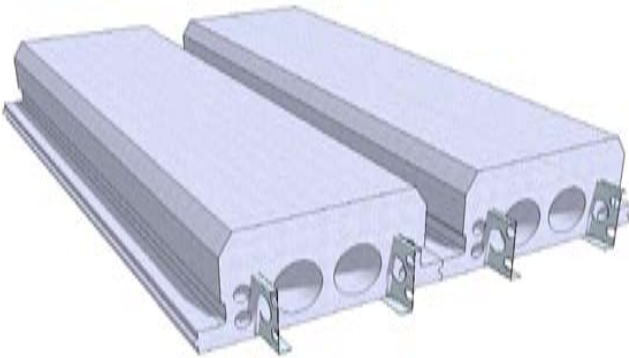
Quad-Deck is a revolutionary joist and deck forming system for floors and roofs, as well as tilt-up construction. Each of the expanded polystyrene (EPS) panels are supported and reinforced with two integral steel beams, molded into the product from end-to-end. The result is a self-supporting joist, deck or tilt-up* forming system that provides the maximum strength of a reinforced concrete deck with a minimum of materials and labor.



Floor Application



Tilt-Up Application



■ Quad-Deck

Available in any length required, up to 43' [13m].
Thicknesses from 7" to 12½" [178mm to 318mm]
Width = 2' [610mm]
Concrete beams from 5" to 10½" [127mm to 267mm]
R-Values range from R-16 to R-33 [U.35 to U.17]
Part #: **QDECK**

Note: This is a product that requires engineering. A waiver is required to purchase this product.

Quad-Deck is manufactured-to-order requiring 2 weeks lead time to ship.

See Page 13 for the Quad-Deck Estimating Program.

■ Rebar Chairs

Rebar Chairs are designed to provide a clearance of ¾" [19mm] between rebar and the bottom of a beam for minimum concrete encasement (in most cases). Rebar Chairs can be used in conjunction with Quad-Deck T-beam structures or with Quad-Lock walls in forming lintels, beams or other components where minimum concrete encasement is critical.

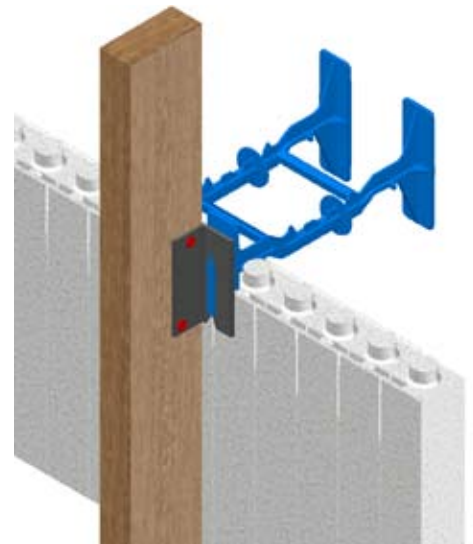
2½" x 4" [64mm x 102mm]
300/box | Part#: **QDECK RC**

* For Tilt-up applications, see Quad-Lock's FAST-R Solution brochure and contact your Regional Sales Manager for more information.

■ Slab Ties & Bracket System

Slab Ties, used in combination with Slab Brackets and 2x4 lumber, will provide a solid support system for 1 to 2 layers of outside panels during the concrete pour of a floor slab. This system eliminates the need for exterior scaffolding or ladders (shoring is still required to support Quad-Deck).

Part#:	Descriptor:
FTB6S	Full Tie Slab—Blue 6" [152mm] concrete, 10" [254mm] total, with connector for Slab Bracket. 60/box
FTY8S	Full Tie Slab—Yellow 8" [203mm] concrete, 12" [305mm] total, with connector for Slab Bracket. 50/box
FTG10S	Full Tie Slab—Green 10" [254mm] concrete, 14" [356mm] total, with connector for Slab Bracket. 40/box
FTR12S	Full Tie Slab—Red 12" [305mm] concrete, 16" [406mm] total, with connector for Slab Bracket. 40/box
FTB14S	Full Tie Slab—Brown 14" [350mm] concrete, 18" [457mm] total, with connector for Slab Bracket. 30/box
SLAB BRACKET	Slab Bracket connects Full Tie Slab and 2x4. Sold individually

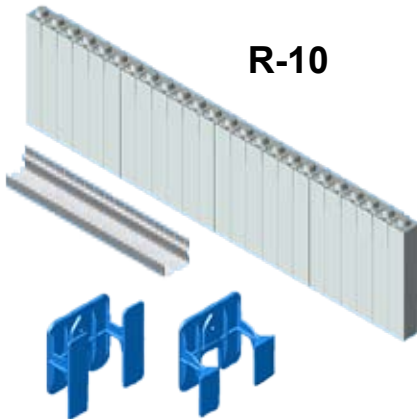


R-ETRO System

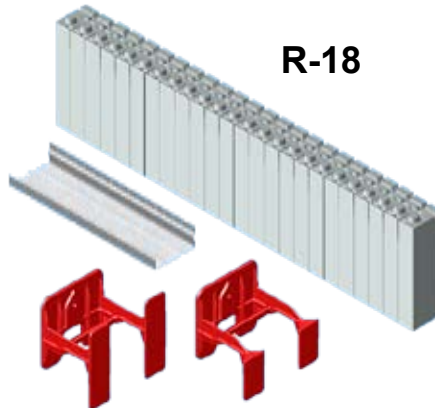
The R-ETRO System offers building owners a simple yet effective way to attach the best performing insulation product to new or existing buildings, interior or exterior, and then serves as a fastening point for finish materials. The R-ETRO System promotes drying capacity and allows a rated fastening for new or existing structures.

The R-ETRO System is available in 3 different insulation options:

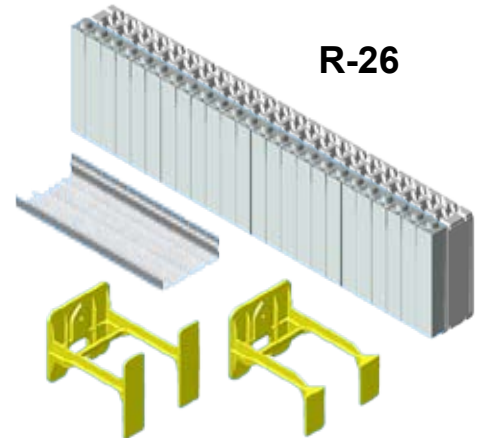
- R-10 uses the QPX2 Regular or FS Panels
- R-18 uses the QPX2 Plus or Plus FS Panels
- R-26 uses the QPX2 Regular or FS Panels + EXTRA Panels



R-10



R-18



R-26

R-ETRO Ties

R-ETRO Ties are injection-molded, high density polyethylene (HDPE). These are inserted in the Panels at regular intervals of 12" or 24" [305mm or 610mm] (depending on load) and fastened to the existing wall.

■ R-ETRO Regular Tie

2" [51mm] Tie
80 Ties/pkg.
Part #: **RT 2**

■ R-ETRO Plus Tie

4" [102mm] Tie
70 Ties/pkg.
Part #: **RT 4**

■ R-ETRO Extra Tie

6" [152mm] Tie
60 Ties/pkg.
Part #: **RT 6**

R-ETRO Top Ties

R-ETRO Top Ties are injection-molded, high density polyethylene (HDPE). R-ETRO Top Ties are used at the top of the wall, in the same intervals as R-ETRO Ties.

■ R-ETRO Regular Top Tie

2" [51mm] Top Tie
80 Ties/pkg.
Part #: **RTOPTIE 2**

■ R-ETRO Plus Top Tie

4" [102mm] Top Tie
70 Ties/pkg.
Part #: **RTOPTIE 4**

■ R-ETRO Extra Top Tie

6" [152mm] Top Tie
60 Ties/pkg.
Part #: **RTOPTIE 6**

R-ETRO Track

Used to start the R-ETRO System at the bottom and for finishing openings. Track is pre-punched every 4" [102mm] with built-in drip ledge.

■ R-ETRO Regular Track

2¼" [57mm] Wide and 7.5'
[2286mm] long
10pc/pkg.
Part #: **CTPR 2**

■ R-ETRO Plus Track

4¼" [108mm] Wide and 7.5'
[2286mm] long
10pc/pkg.
Part #: **CTPR 4**

■ R-ETRO Extra Track

6¼" [160mm] Wide and 7.5'
[2286mm] long
10pc/pkg.
Part #: **CTPR 6**

Other Recommended Components



Track Fastener
(see Page 7)



Wind-lock Fasteners - Stucco or Reg.
(see Page 10)

Available Accessories



- **Peel & Stick Membrane**
Used for waterproofing a below grade wall (no primer required) Membrane is printed with Quad-Lock logo. (This is a Soprema/Resisto product.)
75' x 3' [22.9m x .9m], 40mil,
Coverage = 225sqft [21sqm]
1 Roll
Part #: **MDPEEL 40**



- **Window Fastener (Stucco)**
Window Fasteners for stucco applications.
1000/pkg
Part #: **WIND1-EIFS**



- **Window Fastener (Regular)**
Window Fasteners for regular exterior.
1000/pkg
Part #: **WIND 2**

Damp-proofing by Cosella Dorken

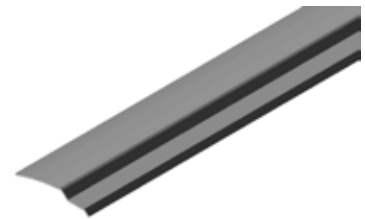
When the Quad-Lock building system is used below grade with no hydrostatic pressure present, the application of exterior damp-proofing is necessary. We recommend transparent dimple board to ensure that finding the tie flanges as attachment points is an easier process. We stock the following Delta-MS products:



- **Dimple Board Rolls**
Delta-MS Clear (transparent) dimple board roll.
8' x 65.6' [2.4m x 20m]
Coverage = 520 sqft [48sqm]
Part #: **DELTAMSCLEAR 8** (1 Roll)



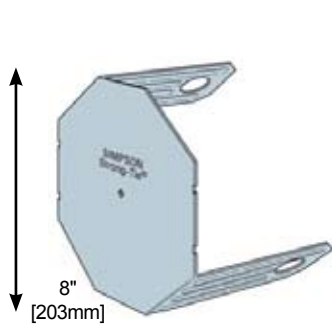
- **Dimple Board Fasteners**
Delta-MS Dimple Board Fasteners. (need 75 for every Dimple Board Roll)
50/pkg.
Part #: **DELTAFASTNER**



- **Dimple Board Finishing Strip**
Delta-MS Finishing Strip
6.6' [2m] each
(11 required for every Dimple Board Roll)
33/pkg.
Part #: **DELTAMOULDSTRIP**

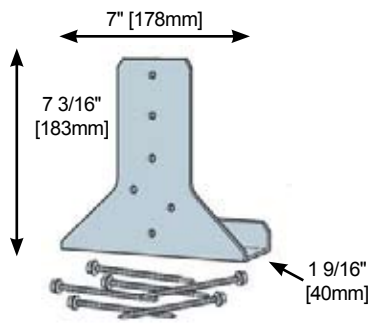
Ledger Connections

Ledger Connectors are used to accommodate a multitude of floor connections. The system provides easy, quick and versatile installation of ledgers when using Regular or FS Panels. Ledger Brackets can also be used for the attachment of interior walls, overhead door attachments, etc.



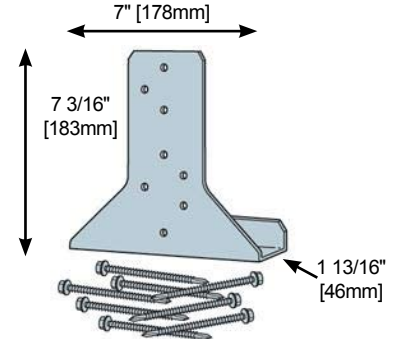
■ Ledger Bracket

- used with ICFVL-W or LVL
15/pkg.
Part #: **ICFVL**



■ Ledger Hanger-W

1 9/16" [40mm] wide
- for solid sawn lumber
15/pkg.
Part #: **ICFVL-W**



■ Ledger Hanger-LVL

1 13/16" [46mm] wide
- for solid LVL
15/pkg.
Part #: **ICFVL-CW**

Wall Alignment Systems



■ Panel Jack

Strongback unit with telescopic brace and platform bracket.
Available in 8' [2.4m], 9' [2.8m], 10' [3.1m], 12' [3.7m], 16' [4.9m], 20' [6.1m] or 24' [7.3m] sizes
1 Each | Part #: **PJACK PRO** or **PJACK TALL WALL**

Panel Jack Guard Rail (as shown in picture)

1 Each | Part #: **PJACK GUARDRAIL P.**



■ Mono-Brace

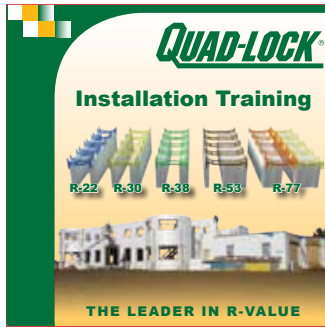
Self-contained telescopic, complete bracing unit with safety rail bracket.
Available in 8' [2.4m], 9' [2.8m], 10' [3.1m] or 12' [3.7m] sizes
1 Each | Part #: **QMBRACE**

Tall or Tilt-up leg (used with two QMBRACE units)
1 Each | Part #: **QMBRACE TALL/TILT**



Please consult your Regional Sales Manager for the system that best fits your needs.

Note: Standard Rental Agreements, for use with your installers, are available from Quad-Lock.
These are not stock items and require two weeks lead time to ship.



■ Quad-Lock Installation Training DVD

The Quad-Lock Installation Training DVD has been created to provide instructional information on the installation of the Quad-Lock & Quad-Deck building solution. The DVD includes the following features:

- Installation instructions including pre-planning, estimating, basic and advanced sections on both Quad-Lock and Quad-Deck
- CAD drawings
- Bonus Videos (Texas Tech video and HGTV segment)
- Product Manual, Code Approvals, PCA Residential Technology Briefs
- Quad-Lock Brochures, Flyers and Testimonials
- Unit Converter

The Installation Training DVD is available in **English, Spanish, German** or **Estonian**.



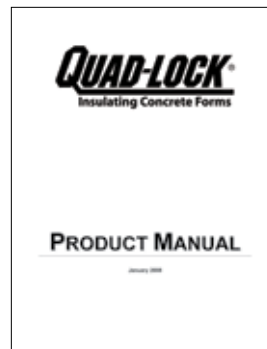
■ Quad-Lock Installation Guide:

Tri-Fold, step-by-step guide to the installation of Quad-Lock. Details include estimating, preparation, footings, pouring, bracing, accessories, etc.

Price: 50 for \$10USD

Part #: **PG-Install**

Available in **English, Spanish & German**



■ Quad-Lock Product Manual:

This is the 'premier reference source' providing detailed specifications, engineering information and installation instructions on Quad-Lock.

Price: \$5USD ea.

Part #: **PG-Manual**



You can download and print this directly from Quad-Lock's website or the Installation Training DVD.



■ Quad-Lock Specifier Reference CD:

The Specifier Reference CD provides detailed product information, technical specs, product approvals, CAD details, Quad-Deck details and the Product Manual.

Part #: **PG-Spec-CD**



■ Quad-Lock Dealer Resources CD:

The Dealer Resources Guide provides background information on Quad-Lock and its products, collateral materials, presentations, profiles and pertinent industry information.

Part #: **PG-Dlr-CD**



■ Quad-Lock Estimating Program:

This program provides accurate and detailed job estimates for Quad-Lock projects. Estimates are also done for concrete, rebar and labor. Customer orders can be generated from the software, streamlining the take-off and order process. (Requires MS Excel 2000 or higher)



■ Quad-Lock Technical Bulletins:

Various Technical Bulletins are available on Quad-Lock's web-site or from the marketing department. Check the web-site for the complete library

Part #: **PM-Bulletin**

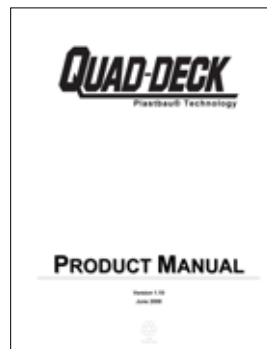


■ R-ETRO System Product Manual:

Includes design & construction details, interior and exterior finishes, code references and detailed drawings for the R-ETRO System.

Price: \$3USD ea.

Part #: **PG-RS-Manual**



■ Quad-Deck Product Manual:

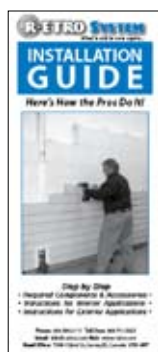
This is the complete reference source for all aspects of Quad-Deck construction, providing detailed specifications, engineering information and installation instructions on Quad-Deck.

Price: \$3USD ea.

Part #: **PG-QD-Manual**



You can download and print the R-ETRO System or Quad-Deck Product Manuals directly from Quad-Lock's website.

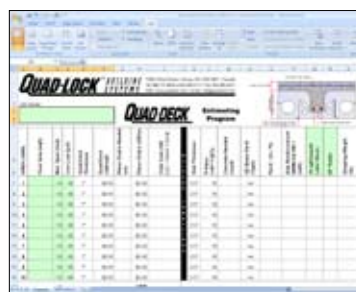


■ R-ETRO System Installation Guide:

Tri-Fold, step-by-step guide to the installation of the R-ETRO System. Details include estimating, preparation, electrical & plumbing, tools & accessories, finishes, etc.

Price: 50 for \$10USD

Part #: **PG-RS-Install**



■ Quad-Deck Estimating Program:

This program provides accurate and detailed job estimates for Quad-Deck projects.*

Estimates are also done for concrete, rebar and labor.

(Requires MS Excel 2000 or higher)

* For Tilt-up estimates, contact Quad-Lock's Training & Technical Services Department.

Professional Services

Quad-Lock's Training and Technical Services (T&TS) was established to provide a complete and comprehensive flow of technical information to design professionals, code officials, and end-users of Quad-Lock products. Areas of expertise range from code compliance and constructability issues, integration of building components to Quad-Lock formed structures, quantity estimates, compilation of technical publications, and installer trainings. These professional services are grouped into the following categories:

■ Telephone Consultation

\$50USD per hour

Utilizing our 800 telephone number, the Technical Services Department will answer your questions regarding:

- Product Queries
- Product Estimating / Take-off Queries
- Installation & Pre-Construction Queries
- Building Codes Queries
- Pre-Construction Queries

■ Training

Installer Training Seminars

\$400USD per day

A qualified Training Leader at your location to facilitate full-day training seminar on background and installation information/techniques of building with Quad-Lock and/or Quad-Deck.

- Basic Installation Seminar
- Advanced and/or Quad-Deck Installation Seminar(s)
- \$400USD/day for a Quad-Lock Appointed Trainer (QL Appointed Trainers will only attend seminars where a fee is being charged to attendees)

AIA / Design Professional Trainings

Travel & Expenses

A certified Trainer will lead a certified continuing education presentation for AIA or other design professionals.

- 1.5 hour "Lunch and Learn" Seminar

On-Site Visitation

\$400USD per day

A Technical Consultant will come to your site to assist with:

- Job-Site Training
- Plans Review
- Pre-Construction Meetings

■ Design / Engineering Services

\$50USD per hour

Technical Services offers a number of other services to help ensure that your project is appropriately planned:

- Project Material Take-Offs
- Technical / Pre-construction Conference Calls
- Custom Construction Details
- Site-specific Shop Drawings
- Product Testing / Approval
- Qualified Engineer Sourcing

■ Marketing Services

\$50USD per hour

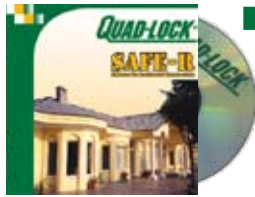
The Marketing Department will assist you with your creative needs, including ad creation, invitations, business card designs, etc. The first 2 hours are free.

■ Industry Involvement / Outreach Programs

In support of client interests, educational institutions, professional organizations, media queries and the industry at large, the following are just some of the areas where Quad-Lock participates:

- Educational outreach to Technical Schools / Universities & Professional Organizations
- Development of specialized training programs
- Development of "best practice" information bulletins
- Speaking engagements at topical building industry conferences
- Ready-Mixed Concrete and Cement Associations' Committees
- Home Builder's Associations
- Building Envelope Councils
- Green Building Organizations
- ICC/CCMC (and others) Standards Development Committees
- Media interviews and technical briefs
- Textbook development
- Private industry events and training

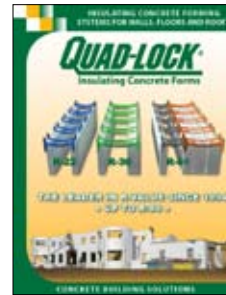
Brochures & Videos



“SAFE-R” DVD:

This twelve-minute video, specifically designed for homeowners, illustrates why building and living in a concrete home is more comfortable, energy efficient and safer than living in homes built with other materials.

Price: 50 for \$10USD



“Contractor” Brochure:

4-Page Brochure designed for contractors, architects and developers. Details the Quad-Lock advantage, product descriptions and specifications.

Price: 50 for \$10USD

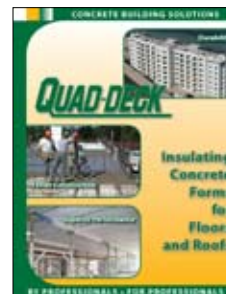
Available in multiple languages including English, Spanish, German, Italian, Estonian, and more.



“SAFE-R” Brochure:

2-Page Brochure directed at homeowners and is designed to go hand-in-hand with the SAFE-R DVD. It addresses the benefits of ICF construction, including an R-Value comparison and monthly housing cost comparison.

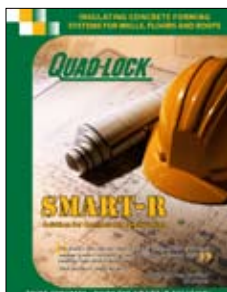
Price: 50 for \$10USD



“Quad-Deck” Brochure:

4-Page Brochure describing Quad-Deck Joist and Deck Forming System. Details the features & benefits and product specifications.

Price: 50 for \$10USD



“SMART-R” Brochure:

4-Page Brochure describing Quad-Lock’s SMART-R solution for Commercial construction. Details features & benefits and product specifications.

Price: 50 for \$10USD



“R-ETRO System” Brochure:

4-Page Brochure describing the R-ETRO System solution for adding insulation to existing buildings.

Price: 50 for \$10USD



“FAST-R” Brochure:

4-Page Brochure describing Quad-Lock’s FAST-R solution for Tilt-Up construction. Details features & benefits and product specifications.

Price: 50 for \$10USD



“Worship Facility” Brochure:

4-Page Brochure describing the features and benefits of Quad-Lock’s solution for the Worship Facility market.

Price: 50 for \$10USD



All Quad-Lock Brochures and Videos can be downloaded from Quad-Lock’s web-site

Flyers & Project Profiles



- **“Professional Services” Flyer:**
2-Page Flyer describing the various Professional Services that we offer from telephone consultations, training seminars to engineering & testing Services.
Price: 50 for \$5USD



- **“Safe Room” Flyer:**
2-Page Flyer describing the benefits of Safe Room construction.
Price: 50 for \$5USD



- **“LEED” Flyer:**
2-Page Flyer describing the advantages when designing with Quad-Lock for your next LEED project. Includes a breakdown of how Quad-Lock contributes to LEED in all the applicable categories.
Price: 50 for \$5USD



- **“Green Checklist” Flyer:**
2-Page Flyer, in a checklist format detailing how Quad-Lock assists in sustainable building practices.
Price: 50 for \$5USD



- **Project Profiles:**
Various Project Profiles are available on Quad-Lock’s web-site or from the marketing department. Check the web-site for the complete library.
Price: 50 for \$5USD



- **“R-ETRO Cut Sheet” Flyer:**
1-Page Cut Sheet that describes the advantages of “Why to Insulate With R-ETRO High Performance Insulation System”.
Price: 50 for \$5USD



- **Comparison Flyers:**
2-Page Flyers comparing ICF to Wood Construction and ICF to CMU Construction. These flyers are designed for the homeowner audience.
Price: 50 for \$5USD



- **“EXTRA Panel” Flyer:**
4-Page document that announces the EXTRA Panel product that gives details on how you can increase your R-Value to R-84”.
Price: 50 for \$5USD



All Quad-Lock Flyers & Posters can be downloaded from Quad-Lock’s web-site

Posters



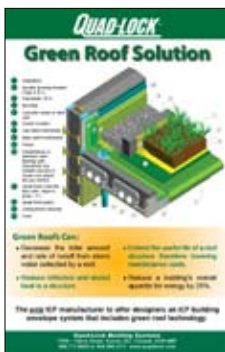
“LEED” Poster:
11" x 17" [28cm x 43cm] table mount poster describing LEED Certification & our Yellowstone LEED project.

Price: \$20USD
Part #: **PM-LEED**



“Training” Poster:
11" x 17" [28cm x 43cm] table mount poster describing Quad-Lock's ICF Installer Training program.

Price: \$20USD
Part #: **PM-TRG**



“Green Roof” Poster:
22" x 34" [56cm x 86cm] or 11" x 17" [28cm x 43cm] laminated poster describing Quad-Lock's Green Roof Solution.

Price: \$65USD - 22" x 34"
Price: \$10USD - 11" x 17"
Part #: **PM-GR**



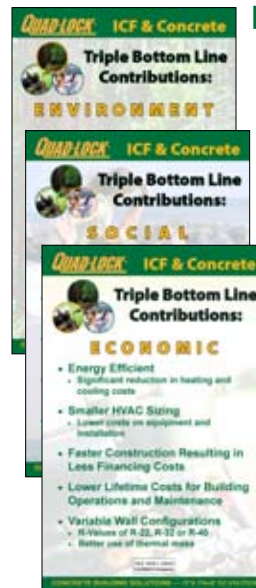
“Worship Facility” Poster:
11" x 17" [28cm x 43cm] laminated poster depicting the usage of the Quad-Lock System in the Worship Facility market.

Price: \$10USD
Part #: **PM-WF**



“Missile Test” Poster:
11" x 17" [28cm x 43cm] table mount poster describing large missile impact tests and how we broke the cannon.

Price: \$20USD
Part #: **PM-MT**



“Triple Bottom Line” Posters:
Set of 3, 22" x 34" [56cm x 86cm] laminated posters describing how Quad-Lock can contribute to your Triple Bottom Line (Environment, Economic and Social).

Price: \$200USD/set of 3
Part #: **PM-TBL**



“R-ETRO” Poster:
11" x 17" [28cm x 43cm] laminated poster describing the R-ETRO System for insulating new or existing buildings.

Price: \$10USD
Part #: **PM-RS**

Promotional Items

Framed Photo Sets:

Set of 9 Framed 8" x 10" [20cm x 25cm] Photos. Available from your Regional Sales Mgr. for special events, trade shows, etc.

Price: \$45USD
Part #: **PM-Photo**



Banners:

Size 2' x 5'
[61cm x 152cm]
Price: \$65USD
Part #: **PM-BN**



Room for your custom sticker here

Graph Paper Pads & Lined Pads:

Price: \$1.00USD

Part #: **PM-GP**
PM-LP



Custom Logo Stickers:

Custom stickers that can be printed with your company logo to use on panels, job-site signs, banners, etc. Approx. size 10" x 6" [25cm x 15cm] (one color graphic or text).
Min. Qty. 1000

Price: \$450USD
Part #: **PM-CDS**



**Bozeman Brick,
Block & Tile
Bozeman, MT
406-587-7283**

Job-Site Signs:

Size 2' x 3'
[61cm x 91cm]
Price: \$30USD
Part #: **PM-JS**



Room for your custom sticker here

Utility Knives:

Price: \$1.50USD

Part #: **PM-UK**



Pens:

Price: \$1.00USD

Part #: **PM-Pen**



Bumper Stickers:

Size 3" x 5"
[8cm x 13cm]
Price: \$0.50USD
Part #: **PM-BS**



Great for your hard hat!

Lanyards:

Green with Quad-Lock logo.
Perfect for Trade Shows or
Special Events

Price: \$3.00USD
Part #: **PM-Lan**





- **T-shirts:**
Grey with Quad-Lock logo.
Sizes include:
Small, Medium, Large, X-Large and XX-Large
Price: \$9CDN \$7USD
Part #: **PC-TShirt**



- **Golf Shirts:**
White with Quad-Lock logo.
Sizes include:
Small, Medium, Large, X-Large and XX-Large
Price: \$30CDN \$23USD
Part #: **PC-Golf**



- **Ladies Shirts:**
Black with Quad-Lock logo.
Sizes include:
Small, Medium & Large
Price: \$28CDN \$28USD
Part #: **PC-Ladies**



- **Long Sleeve Shirts:**
Forest Green Twill or Oxford Blue with Quad-Lock logo.
Sizes include:
Small, Medium, Large, X-Large and XX-Large
Price: \$30CDN \$29USD
Part #: **PC-Long**



- **Fleece Vests:**
Black with Quad-Lock logo.
Sizes include:
Small, Medium, Large, X-Large and XX-Large
Price: \$30CDN \$27USD
Part #: **PC-Vest**



- **Bomber Jackets:**
Black with Quad-Lock logo.
Sizes include:
Small, Medium, Large, X-Large and XX-Large
Price: \$160CDN \$145USD
Part #: **PC-Jacket**



- **Baseball Hats:**
Black with Quad-Lock logo.
One size fits all.
Price: \$7CDN \$6USD
Part #: **PC-Hat**

Note: CDN & US prices are based on different CDN & US suppliers, not exchange rates.

Ancillary Brochures & Flyers



Wind-lock Catalog:
Complete catalog on Wind-lock products including EIFS, Stucco, Foam Cutting, Trimroc and Drywall products specifically for concrete construction.

www.wind-lock.com



Cosella Dorken Brochure:
Delta-MS Foundation Waterproofing brochure.

www.cosella-dorken.com



Panel Jack Flyer:
4 Page Brochure from Reechcraft with information on bracing systems.

www.reechcraft.com



Mono-Brace Flyer:
4 Page Brochure from Mono-Brace with information on bracing systems.

www.mono-brace.com



Ledger Connections Brochure:
6 Page Brochure from Simpson Strong-Tie. Information on their ICF Ledger bracket system.

www.strongtie.com



Energy-Wise Brochure:
4 Page Brochure from Energy-Wise Structures. Residential and Commercial formats.

www.energywisestructures.com



Soprema Colphene ICF Brochure:
2 Page Flyer from Soprema with information on their Colphene ICF waterproofing product.

www.soprema.com



PCA Resources Catalog:
Catalog for Books, Videos, Brochures and Promotional Tools distributed by the Portland Cement Association.

www.cement.org



General Guidelines

Order Forms

Copies of order forms can be found within the Dealer Binder, on the Extranet and within the Estimating Program and should be utilized. No phone orders will be taken. Orders need to be in proper quantities. (See sample orders on the following page.)

Stock Items

Each warehouse has limited inventory levels, to keep inventory costs down. If you have a large order, please call the office so we can check stock levels. Given some lead time, we can prepare to have the stock on hand for your order.

North America

Time-Frame

Lead-time for shipping orders can range from next day to 10 days. On average, it takes at least 2 days to book a truck. Lower freight rates can be obtained if more lead time is given (1 week).

LTL Shipments

Less than Truckload orders can be done, but are not recommended. LTL deliveries take much longer in transit and sometimes require trans-loading. This can lead to late deliveries and damaged products. Additional insurance is recommended so that any damaged product can be claimed through the shipping company.

Containers

Time-Frame

2 weeks from order placement for order fulfillment. Anticipate shipping time to be approximately 3 to 4 weeks (ocean freight) for port delivery.

Shipping Terms

- CIF means shipment from our factory to the port of your choice. Quad-Lock prepays for ocean freight and insurance (to be billed separately to your account). It is the consignee's responsibility to then arrange in-land freight and pay for the duties/taxes/customs associated with the import.
- DDU means shipment from our factory to your door (full delivery address needs to be provided at time of quotation). Shipment is prepaid with insurance and in-land freight to your door (to be billed to your account later). Consignee pays for duties/taxes/customs.
- DDP means shipment from our factory to your door (full delivery address needed at time of quotation). Shipment is prepaid with insurance, in-land freight and all related customs duties paid by Quad-Lock (to be invoiced to your account upon receipt of invoice from broker).

Shipping preference is CIF. Please specify at time of order if you do not have the ability to arrange in-land freight.

Non-Stock Items

Quad Deck requires **2 weeks lead time** AFTER the signed waiver/cutlist is received. Quad-Deck is manufactured-to-order, we do not keep inventory.

Reechcraft and Monobrace bracing/alignment systems are not stock items, these require **2 weeks lead time** to ship.

Full Loads

Typically, Quad-Lock products fit best into a 53'dv (dry van). You can arrange for your own transportation however, our warehouse needs to be notified at least 24 hours in advance for a loading time. It is always best to speak to the office when arranging your own freight. If you are arranging your own freight, it is important to know that our 4' x 4' x 8' high pallets are considered oversized. Typical weights for a full 53'dv are about 10,000 lbs.

Bill of Ladings/Paperwork

Most shipments are sent on Express BOL (also called Telex release). It is extremely helpful for consignee to be familiar with any importation regulations and paperwork required.

Standard paperwork for an Express BOL is a Commercial Invoice.

Additional paperwork can include Certificate of Origin, Certificate of Disinfection, SED form, CARICOM.

ORIGINAL bill of ladings will only be issued if requested, or if we are aware of the destination country regulations. So far, only Nigeria and Dubai require original BOLS.

Also, there can be only one consignee stated per container. If you have multiple orders, it is your responsibility to sort the shipment once received.

Tariff Codes

There are 2 codes that are applicable to Quad-Lock products.

- 3926909790 – Construction Materials Made of Plastic
- 73089099000- Construction Materials Made of Galvanized Steel

Shipping Configurations

Shipping Information:

- See Page 23 for complete Shipping Guidelines

Pallet Information:

- Tie Boxes - 24 boxes/pallet
- Panels - 16 QPX2 or QPX2 FS bags/pallet
- Panels - 12 QPX2 Plus, QPX2 Plus FS or QPEXTRA bags/pallet
- A 53' Truckload holds 26 pallets (24 pallets when it is not top-loaded)



Quad-Lock Sample Shipping Configurations:

Sample 53' Truck Load Configuration

1750	QPX2-Panel Pairs (5 pairs/pkg)
60	QPX2 Plus-Panel Pairs (3 pairs/pkg)
2600	FTB 6-Full Tie 6" (60/pkg)
4200	FTB 8-Full Tie 8" (50/pkg)
400	WTT 6 DACS-6" Wire Top Ties (100/pkg)
600	WTT 8 DACS-8" Wire Top Ties (100/pkg)
600	CBI-Inside Corner Brackets (50/pkg)
600	CBO-Outside Corner Brackets (100/pkg)
50	CBA-Angle Brackets (1/pkg)
250	CTP-2¼" Track 10ft length (10/pkg)
1000	WIND1 - Window Fastener Stucco (1000/pkg)

Sample 40' Container* Configuration

1200	QPX2-Panel Pairs (5 pairs/pkg)
42	QPX2 Plus-Panel Pairs (3 pairs/pkg)
1800	FTB 6-Full Tie 6" (60/pkg)
3000	FTB 8-Full Tie 8" (50/pkg)
300	WTT 6 DACS-6" Wire Top Ties (100/pkg)
500	WTT 8 DACS-8" Wire Top Ties (100/pkg)
300	CBI-Inside Corner Brackets (50/pkg)
300	CBO-Outside Corner Brackets (100/pkg)
50	CBA-Angle Brackets (1/pkg)
180	CTP-2¼" Track 10' length (10/pkg)
1000	WIND1 - Window Fastener Stucco (1000/pkg)

Quad-Deck Sample Shipping Configurations:

Sample 53' Truck Load Configuration

3200 sqft of the 12½" Quad-Deck product (largest)
6000 sqft of the 7" Quad-Deck product (smallest)

Sample 40' Container Configuration

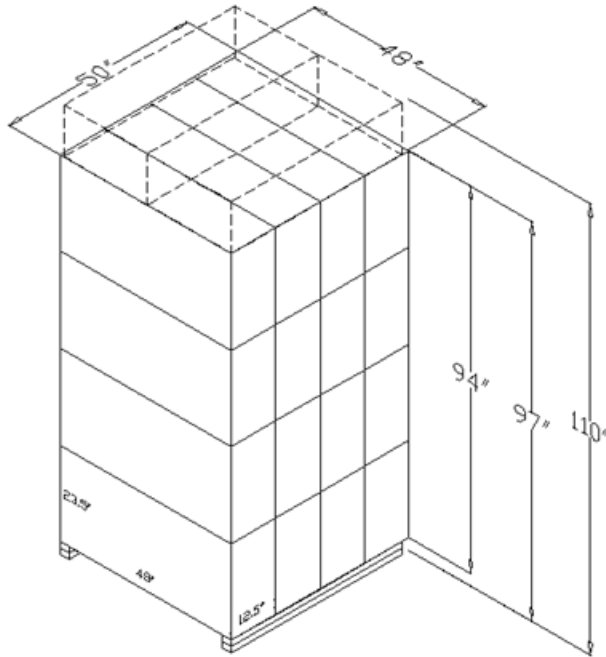
2400 sqft of the 12½" Quad-Deck product (largest)
4500 sqft of the 7" Quad-Deck product (smallest)

* Sample 40' Container configurations are for a High-Cube Container.

Pallet Specifications

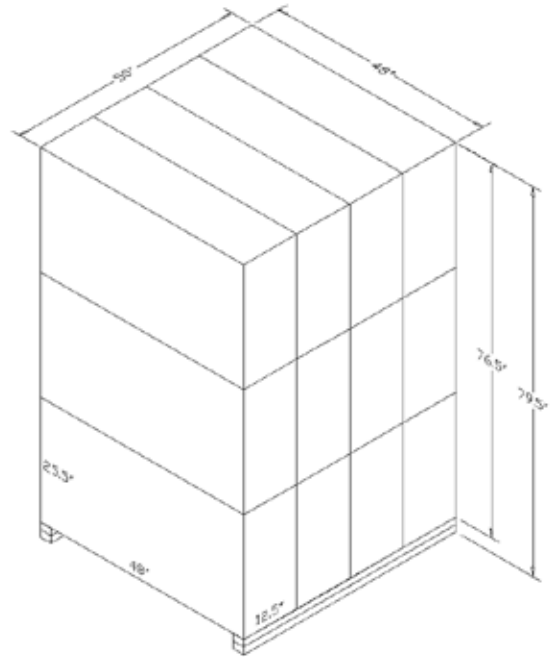
Panel Pairs (Regular)

Weight per bag = 6.5kg (5 units x 1.3kg)
 Dimensions per bag = 48" x 12½" x 23½"
 Weight per pallet = 104kg (16 bags x 6.5kg)
 Dimensions per pallet: see below



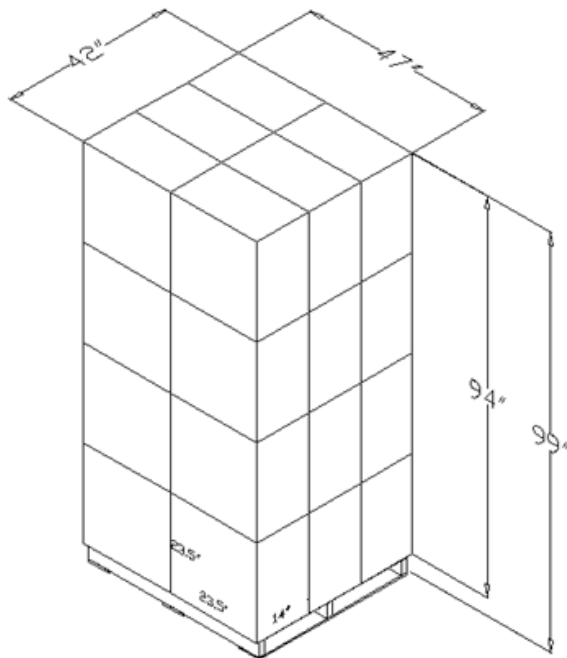
Panel Pairs Plus

Weight per bag = 5.4kg (3 units x 1.8kg)
 Dimensions per bag = 48" x 12½" x 25½"
 Weight per pallet = 65kg (12 bags x 5.4kg)
 Dimensions per pallet: see below



Ties

Weight per box = approx. 7.56kg (40 to 60 ties/box)
 Dimensions per box = 23½" x 14" x 23½"
 Weight per pallet = approx. 182kg (24 boxes x 7.56kg)
 Dimensions per pallet: see below



Brackets

Inside Corner Brackets (CBI)

Weight per box of 50 = 4.25kg (.085kg each)

Outside Corner Brackets (CBO)

Weight per box of 50 = 7.75kg (.155kg each)

Angle Brackets (CBA)

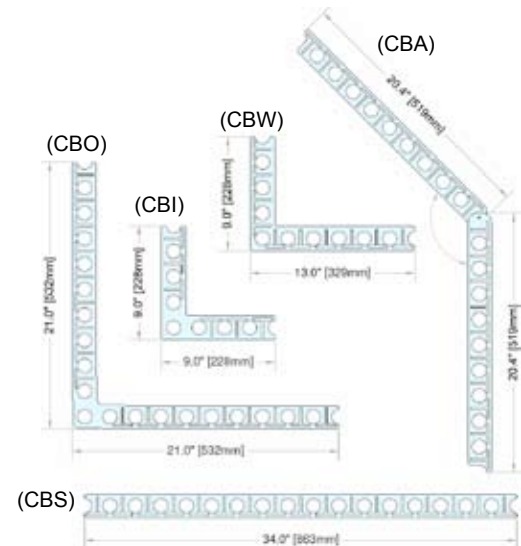
Weight = .454kg each (22.7kg per box of 50)

Window/End Cap Bracket (CBW)

Weight = .272kg each (13.6kg per box of 50)

Straight Bracket (CBS)

Weight = .454kg each (22.7kg per box of 50)





North America:

7398-132nd St.
Surrey, BC V3W 4M7 Canada
www.quadlock.com

Tel: 604.590.3111 Toll Free: 888.711.5625
Fax: 604.590.8412
Email: info@quadlock.com

Europe:

Blumenstr. 1
80331 München, Germany
www.quadlock.de

Tel: +49 (0) 89.260.3066
Fax: +49 (0) 89.260.8471
Email: service@quadlock.de

